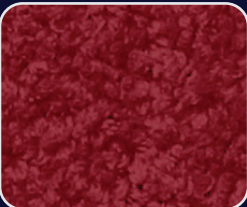




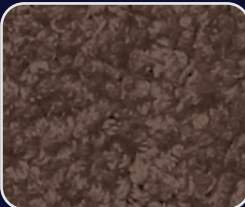
1393 GRANOLA CREAM



1325 RAVISHING RED



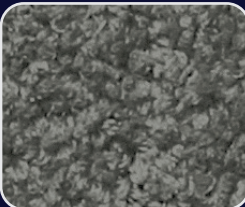
1326 GARNET RED



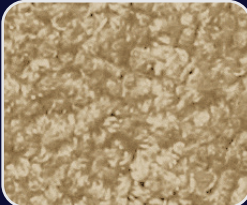
1345 CINNAMON
BROWN



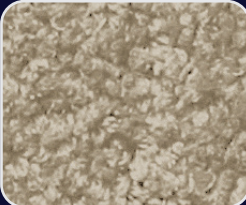
1356 AEGEAN BLUE



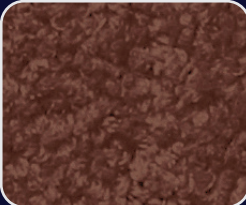
1375 HARPER GREY



1393 GRANOLA
CREAM



1394 TUSCON BEIGE



1412 NUTMEG CANDY



1620 SPINACH GREEN

ROYAL VELVET Specifications

Construction	1/8" Plain Cut Pile
Yarn Composition	100% Solution Dyed Olefin
Tufted Pile Weight	ca. 1250 g/m ² (36.86 oz/yd ²) (+/- 5%)
Total Weight	ca. 2250 g/m ² (56.04 oz/yd ²) (+/- 5%)
Pile Height	ca. 12 mm (+/- 0.5 mm)
Total Height	ca. 14 mm (+/- 0.5 mm)
Density (APYD)	2809 oz/yd ³
Tuft Density	103,632 stitches/m ² (+/- 5%)
Primary Backing	Woven
Secondary Backing	Action Back
Standard Roll Size	4.00m x 30m

Warranties

10 Year Residential Carpet Wear Warranty

The subfloor should be dry, smooth, flat, dust-free and resistant to compression and load-bearing. Where seaming is necessary, a seam sealant must be used for all such installations. Due to dye lot variations, actual material may vary slightly from the samples. Chair pads are recommended to prevent premature wear of carpet.

Performance

Flammability	0.22 watts/cm ² (ASTM E 648-15e1)
- Radiant panel	Pass - 8 (ASTM D 2859-96)
- Pill Test	Pass - Max. 450 (ASTM E 648-15e1)
- Smoke Density	
Colourfastness	
- to light	≥ 4 - 5 (ISO 105 B02:2014)
- to water	≥ 4 - 5 (ISO 105 E01)
- to perspiration	≥ 4 - 5 (SASO ISO 105-E04 ACIDIC & ALKALINE)
- to Rubbing	≥ 4 - 5 (EN ISO 105X12:2016)
- to Shampooing	≥ 4 - 5 (ISO 18168)
Determination of Tuft Withdrawal force	40N (ISO 4919:2012)
Resistance to Delamination	2.0 lbf (ISO 11857:1999)
High Performance Liquid Chromatography (HPLC) Analysis	PASS (DIN 54321)
Cadmium	Not Detected (EN 1122.)
Plasticizers	Not Detected (SASO GSO 1957 / SASO ISO 14389)
Formaldehyde Content	Not Detected (ISO 14184-1:2011 & SASO ISO 14184-2)



ROYAL VELVET



1356 AEGEAN BLUE

ROYAL VELVET



Cut



Broadloom

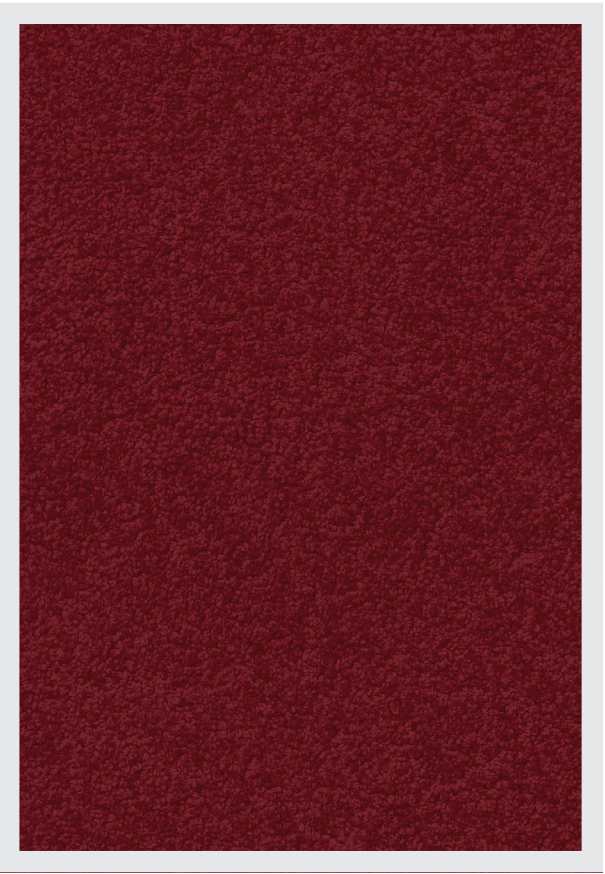


Bringing Floors to Life...





1325 RAVISHING RED



1326 GARNET RED



1394 TUSCON BEIGE



1393 GRANOLA CREAM



1345 CINNAMON BROWN



1375 HARPER GREY



1356 AEGEAN BLUE



1412 NUTMEG CANDY



1620 SPINACH GREEN